

Cutting Edge

Haefeli-Lysnar Newsletter



Issue 11 | December 2011



**It's not too late to RSVP to our
Christmas Functions!**



Yes it's that time of year again, Can you believe it!?
Please see below details for our upcoming Christmas Functions.

The nights will be informal, great fun and a good opportunity to discuss where 2011 has gone!! Good food and fine beverages will be provided.

Please RSVP to Ashlea@hlse.com.au or phone (08) 9445 8811.

Bunbury – Haefeli-Lysnar Client Christmas Party:
Barbados, Wednesday 7th December, 6.30 – 9.30pm

Perth - Haefeli-Lysnar Client Christmas Party:
Oxford Hotel, Friday 9th December, 6.30 – 9.30pm

We hope to see you all there!



Inside this Issue...

UAV's now available at HL Pg 2

Controller Touchscreen
Technical Tip Pg 3

SSSI Corporate Bowls
Challenge Pg 3

Exciting new Remote
Ethernet Alarming Solution Pg 4

Gallileo update Pg 5

 Find us on
Facebook

**'LIKE' OUR PAGE TO
HAVE ACCESS TO ALL
THE LATEST NEWS,
PRODUCTS, SPECIALS
AND LOTS MORE!**

[CLICK HERE](#)

UAV's Now available at Haefeli-Lysnar!

We are very excited to announce that we now hold the West Australian distributorship for Sensefly Unmanned Aerial Vehicles (UAV's)



swinglet CAM

The easy-to-use flying camera

The swinglet CAM is a ready-to-deploy mini drone with a high-resolution camera. Thanks to its autonomous take-off and landing, operating the swinglet CAM is very easy and it comes with all equipment needed for immediate operation. [Watch this video to see how it works.](#)

Artificial Intelligence

The artificial intelligence incorporated in the senseFly autopilot continuously analyzes data from the Inertial Measurement Unit and from the onboard GPS and takes care of all the aspects of the flight mission. Even in the absence of radio connection with your laptop, the senseFly autopilot will safely accomplish the mission. Sit back and relax.

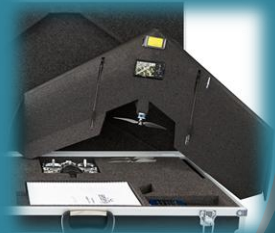
Easy flight planning

The included e-motion software lets you plan and control the trajectory of the swinglet CAM both before and during flight. You can monitor the flight trajectory on the screen of your laptop and receive status information; with simple drag&drop actions you can update the flight plan; and with a mouse click you can trigger pictures, return the swinglet CAM to its starting location, or initiate landing.

All in 1 box

With only 80cm wingspan, the swinglet CAM can be easily transported without need for disassembly. You can pack and store it with all its accessories in one case. This elegantly designed and sturdy case will protect your swinglet CAM so that, wherever you go, your swinglet CAM is always ready for use. [See what's in the box.](#)

For more information on the Swinglet CAM or the entire range of UAV's available, please click [HERE](#) or contact Jesse Huff on 0408 324 494.



“Thanks to its autonomous take-off and landing, operating the swinglet CAM is very easy and it comes with all equipment needed for immediate operation”

LET'S GET TECHNICAL!



Maximizing the controller display and touchscreen lifespan

Controller displays and touchscreens require proper care to prolong life. To maximize the lifespan of the controller touchscreen, a screen protector must be applied to the touchscreen at all times. A screen protector will protect the controller touchscreen from scratches, dust, condensation, and stylus wear.

Trimble recommends that you use the ScreenGuardz static-cling screen protector as this leaves less residue than other adhesion-type screen protectors. The controller is shipped with one screen protector pre-applied. Replacement screen protectors are also provided in your package and can be re-ordered.

Follow the additional tips below to maximize the touchscreen lifespan:

- Replace the screen protector every four weeks even if it does not appear to be worn out. Longer change frequencies may result in more difficult removal and touchscreen delamination.
- Clean the touchscreen following the cleaning procedures outlined in this document before applying a new screen protector. This will lift contaminants away from the screen to reduce scratching.
- Use the Trimble-provided stylus only. Avoid using excessive pressure and sharp or abrasive objects. Using other objects on the touchscreen can result in damaging scratches and a shorter touchscreen lifespan.

Removing a screen protector

- Use sticky tape on one corner to begin the lift of the screen protector being sure not to apply the tape to the underlying touchscreen.
- Do not use a sharp, metal, or plastic object to lift the screen protector.
- Once you have the corner lifted, finish removing the screen protector with your hand by slowly peeling back the protector from the started corner to the opposite corner until removal is complete.

Cleaning the controller display and touchscreen

- Clean the surface of the touchscreen using the cleaning cloth provided and water only. A cleaning cloth is included in the screen protector replacement package. Do not immerse the controller in water.
- Do not use glass cleaner to clean your touchscreen display. Many glass cleaners contain Ammonium Hydroxide, which may result in damage to the touchscreen.

Please contact Aaron Burgess for assistance on this technical tip or any other technical questions you may have on 0429 101 767 or email aaron@hlse.com.au



SSSI Corporate Bowls Challenge



A few of our crew got a team together for the Annual SSSI Lawn Bowls Challenge last month.

Quietly confident with a young vibrant team, Aaron, Paul, Jered & Jeremy headed off to the Morley Rec Centre to compete against other teams from the industry.

Unfortunately our team didn't win but there is always next year!

Here are a few photo's from the challenge.

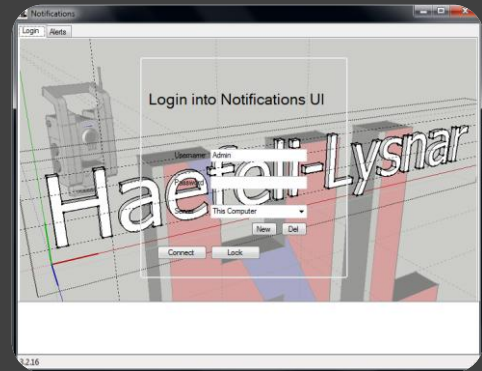


Brand New HL Developed Solution now available. Remote Ethernet Site Alarming (RESA)

This solution has given us the means to trigger a full alert status on sites.

This is done using signals such as;

- Flashing Lights
- Sirens
- Automatic VOR (Voice over radio)
- Emails
- Text messaging
- and more



RESA can be integrated across multiple computers allowing a distributed alarm environment and multiple means of acknowledgement and cancelling alarms.

The RESA solution is made up of a couple of parts;

Notificaitons.exe

A HL developed program which integrates very nicely into T4D.

Notifications.exe monitors the status of T4D and the measured areas and responds instantly to produce whatever alarm specified.

The program networks to other installations of itself to receive alarm acknowledgements.

Alarm Box

These can be placed anywhere within radio range and can be shipped out with optional solar panels.

The boxes have siren, red light, and option green light built onto them.

The red light and siren can be set to go off when an alarm is triggered and the green light can be set to flash every minute or so as an all clear.

Office Radio Box

This is the VOR component; A audio stream can be played over any existing site radios to 2-ways, vehicle radios, and more. The audio stream can be a pre recorded audio file or a text to speech to identify the alarm type and hazard location.

For more information on RESA please contact
Jesse Huff on 0408 324 494 or email jesse@hlse.com.au



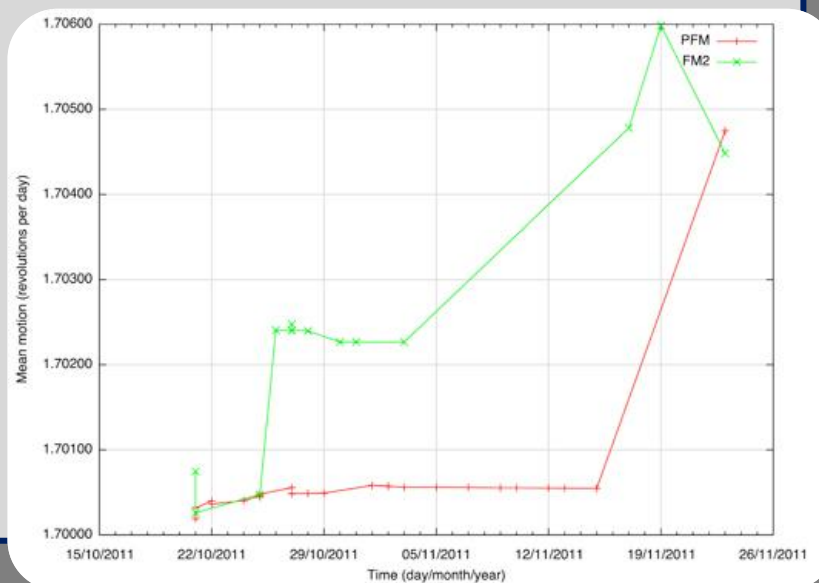
Galileo IOV Satellites Reach Operating Orbits



An announcement from ESA on November 4 stated "Europe's first two Galileo IOV satellites have reached their final operating orbits, opening the way for activating and testing their navigation payloads." But, based on NORAD/JSpOC tracking of the satellites, it seems that the final orbits were achieved only a day or so ago.

[The plot below \(and linked here\)](#) shows the mean motion (mm) of the PFM and FM2 satellites since launch. As evidenced by the lengthy gaps in the mm history, it is clear that NORAD/JSpOC sometimes has difficulty in reacquiring satellites after delta-V manoeuvres. We do know, however, that both satellites have appeared to reach their final orbits sometime between November 19 and 23. The mm values are now very close to the value 1.7046556 orbits per day derived from the mean semimajor axis of the Galileo constellation as given in the Galileo Open Service Signal-In-Space Interface Control Document: 29601.297 km.

The arguments of latitude of the two satellites, essentially in the same orbit plane, are now 40 degrees apart as intended. There have not been any public reports that navigation signals from the satellites have yet been switched on.



For a Laugh..

And you thought your day wasn't going well.

