

Cutting Edge

Haefeli-Lysnar Newsletter



Issue 9 | September 2011

The Trimble S8 Total Station 1" Now Available

The Brand New Trimble S8 Total Stations is now available with both DR Plus™ EDM and Long Range FineLock™ combinations.

Trimble DR Plus EDM technology provides Direct Reflex measurements without a prism at exceptionally long ranges; Trimble Long Range FineLock detects targets at distances of up to 2500 m without interference from surrounding prisms.

The new models are targeted at high precision applications such as deformation monitoring, mining, or tunneling applications, where users also need DR measurement capability to difficult surfaces or at longer ranges.



If you would like more information on the new features available for the Trimble S8 Total Stations please contact Dion Wilson on 0409 084 612 or email dion@hlse.com.au

Inside this Issue...

BRAND NEW RELEASE! Pg 2
Trimble GeoExplorer Network Rover

Trimble Access Technical Tip Pg 3

Trimble M3 Now Available Pg 3
With Trimble Access

Save \$ and Time with our Pg 4
Annual Maintenance Plans

Trimble Vision now available Pg 5
On our S6 Total Station



 Find us on Facebook

'LIKE' OUR PAGE TO HAVE ACCESS TO ALL THE LATEST NEWS, PRODUCTS, SPECIALS AND LOTS MORE!

[CLICK HERE](#)

BRAND NEW RELEASE!!!
JUST ANNOUNCED AT INTERGED

Trimble GeoExplorer® GeoXR™ Network Rover: Trimble Productivity, Handheld Convenience

The new rugged Trimble GeoExplorer GeoXR Network Rover is a purpose-built complete solution designed to make both high-accuracy surveying and handheld point measurement easier, more efficient, and more flexible. The Trimble® GeoXR Network Rover adds a new aspect to GNSS surveying productivity by combining the functionality for high-accuracy field work with the flexibility and convenience of handheld positioning in one device.

The Trimble GeoXR can be used mounted on a survey rod with an external antenna for survey-grade accuracy and when connected to Trimble VRS™, it serves as an advanced and highly productive Network Rover. Then snapped off the rod and seamlessly switched to the integrated antenna, it becomes a solution for handheld point measurement with easy access to features such as the integrated camera.

- *Advanced Network Rover solution*
- *Centimeter accuracy in a handheld form factor*
- *Optimized for Trimble Access field software*
- *Sunlight readable color display with unmatched clarity in bright sunlight*
- *Capture high quality photographs and link directly to measured points*

For more information on the Trimble GeoXH Network Rover, please click [HERE](#) or contact our sales team on sales@hlse.com.au

To learn more about Trimble VRS technology [click here](#).

OPTIMIZED FOR TRIMBLE ACCESS

***TRIMBLE VRS™ + TRIMBLE ACCESS +
SERVICES ON THE TRIMBLE GEOEXPLORER
GEOXR FORM FACTOR IS THE ULTIMATE
HIGH-END NETWORK ROVER SOLUTION!!***



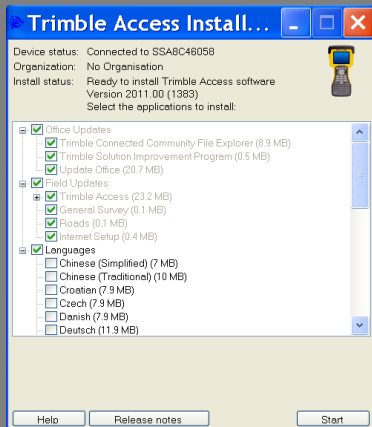
LET'S GET TECHNICAL!



TAIM – TRIMBLE ACCESS INSTALLATION MANAGER

The Trimble Access Installation Manager installs the application updates and licenses to your controller. It also updates your Trimble office software so that it can communicate with the updates being installed to the controller. This process requires an internet connection to access the files to install.

- If you have not installed the Installation Manager before, you will need to install it. To Download and Install the Installation Manager, follow the instructions at <http://www.trimble.com/taim>.
- If you have installed the Installation Manager before, you do not need to reinstall it because it updates itself automatically, if required. To install application updates and licenses to the controller, follow the instructions on [How to update Trimble Access applications and licenses](#).



- Once the Trimble Controller unit that's running Trimble Access software has been connected using the USB cable, Double click on the TAIM shortcut that will have been placed on your desktop.
- Click Start to begin the update process. All jobs on Controller will be automatically updated to the latest version installed.
- Click on Release Notes to view the Help Manuals for each Trimble Access Application.

Please contact Aaron Burgess for assistance on this technical tip or any other technical questions you may have on 0429 101 767

JUST ANNOUNCED!

The power of Trimble Access Field Software is now available on the Trimble M3 Mechanical Total Stations.



Trimble Access software offers surveyors a new approach to surveying that expedites data collection, processing, analysis, and delivery through improved workflows, collaboration and control. Designed to support the surveyors' everyday work, including topographic surveys, staking, control and more, Trimble Access offers a familiar, easy-to-use interface to ensure a short learning-curve.

Trimble Access on the Trimble M3 allows surveyors the optional availability of Trimble Access Roads module. The Trimble Access Roads module imports road definitions from many third-party sources, allowing users to key in a complete road definition including horizontal and vertical alignments, templates and superelevation, and widening records. Users are guided through fast offsets, slope staking, real-time redesign and real-time quality control.

To learn more about the Trimble M3, please click [HERE](#)



We are very excited to announce our Brand New Annual Maintenance Plans.

Keep Things Running Smoothly!

PROTECT YOUR TRIMBLE INVESTMENT WITH AN ANNUAL MAINTENANCE PLAN

Mother Nature and market demands wait for no one. If an equipment problem halts your operation, you can't control the clock – much less your downtime and costs. An Annual Hardware Maintenance Plan for your Trimble equipment is an excellent way to protect your cash flow and prepare for the unexpected.

WE STAND BEHIND OUR PRODUCTS AND BESIDE YOU

Relax, you'll have the most comprehensive coverage in the industry. Your business, schedule, and budget are safe. This is how business should be done – with a firm handshake and an even firmer commitment.

WHAT DOES THE PLAN INCLUDE?

The Annual Hardware Maintenance Plan combines annual servicing on your equipment with a Trimble extended warranty. This combination ensures that your equipment is running smoothly and efficiently while giving you the peace of mind and protection that comes from an extended warranty.

*There are many options available,
For more Information please contact
Sarena Choy on (08) 9445 8811
or email sarena@hlse.com.au*



TRIMBLE S6 NOW AVAILABLE WITH TRIMBLE VISION

With Trimble VISION technology, the Trimble S6 Total Station enables you to see everything the instrument sees, without a trip back to the instrument. Surveyors can remotely see and measure through a live video feed from the instrument on their data controller. By integrating survey data with the live video, surveyors can verify their work and ensure that they have captured everything before leaving the job. The calibrated camera allows users to easily integrate images into their survey workflows. Photo documentation also allows surveyors to complement the data they provide to clients with images of the job conditions and point attributes, making the data easier to understand.



The Trimble S6 Total Station continues to provide surveyors with power and flexibility. It includes the long-range EDM performance of Trimble DR Plus technology, making it capable of direct reflex measurements at more than double the range of previous models. Longer range means fewer instrument set-ups and easier access to more locations, saving surveyors time and money.

Video-Assisted Documentation

Leave the site with more than just coordinates. With the Trimble S6, live images are captured with point-and-click efficiency.

- Document important visual information like site conditions and details
- Easily recall what was at the scene



Long-Range Accuracy

With the exceptional EDM¹ range of Trimble DR Plus™ inside, you can extend your reach on the job for fewer setups and more measurements.

Precision Built

Angular accuracies of up to .5", combined with the Trimble DR High Precision EDM, provides the flexibility to tackle the most demanding projects.



**Please contact one of our sales team for more information
On the New Trimble S6 with Trimble Vision, by emailing
sales@hlse.com.au or phone our office on (08) 9445 8811**



**Christmas is only 85 days away!!
And the dates are set for our Annual Christmas Functions**



Bunbury Function – Wednesday 7th December

Perth Function – Friday 9th December

Invitations will be sent out soon, make sure you keep one or both of these dates free!