



2/28 Hasler Road,
Osborne Park
WA 6017
Ph (08) 9445 8811
Fax (08) 9445 8822
Email: info@hlse.com.au

April 2011 Newsletter

New Technology in Positioning Seminar, HUGE SUCCESS!!

Our New Technology in Positioning Seminar, held at the Wembley Golf Course on Wednesday 16th March 2011 was a resounding success with a record attendance and some very informative and entertaining sessions.

Congratulations to Eugene Brown who won the "Human EDM" competition (He was only 230mm off the correct distance!!)

Congratulations also to the winning golf team: John Maitland, Sean Griffiths, Ricky Catlin and Ben Arthur.

We would like to thank all who attended and we hope that you found the day entertaining and worthwhile.



Inside this Issue:

View our Latest Trade In Offer on the Brand New TSC3 Controller 2

Technical Tip— Converting Files on your Controller 3

Small Business News — Handley Surveys on Small Advisory Board for Australia 4

High Precision Trimble GX Laser Scanner now available for Hire 4

For anyone who missed out on our Seminar, there is a DVD available of the day through the SSSI Office in Nedlands, for a fee of \$50. If you are interested or have an enquiry please contact Faye from SSSI on 9386 6601.

TAKE ADVANTAGE OF OUR TSC3 TRADE-IN OFFER!!

Haefeli-Lysnar are pleased to offer you the chance to upgrade to the Brand new TSC3 controller, by offering a trade-in on your old field controller. This offer is aimed at a trade-in of the TSC2 controller, but older and non-Trimble controllers will be considered as well!

DETAILS:

TSC2 Controller Trade-in offer: **\$2 500**

Older or Non-Trimble Controller Trade-in offer: **\$1 000**

This means that when you trade in your old TSC2 controller for a new TSC3 controller, you only pay:

No Integrated Radio: **\$6 000+GST (List Price=\$8 500)**

Integrated Radio: **\$8 000+GST (List Price=\$10 500)**

FEATURES AND BENEFITS:



- * Better Performance (800MHz processor means software is quicker, improved active maps)
- * More memory (256 MB)
- * More storage (8GB onboard, expandable by SD or USB)
- * Large, bright, high resolution screen
- * Integrated 5MP camera with flash (Take georeferenced images)
- * Internal GPS (Navigate to points)
- * Integrated 3G (VRS, in-field data transfer)
- * Integrated compass (Simplify stakeout)
- * Choice of keyboard layout (ABC or QWERTY)

Please contact Jesse Huff on 0408 324 494 or Dion Wilson on 0429 084 612 for more information or to take advantage of this offer.

Offer Valid until 30 June 2011

Technical Tip—Converting files on your Trimble Controller

COVERT YOUR FILES INTO DIFFERENT SOFTWARE VERSIONS:

Covert Survey Controller jobs to Access :

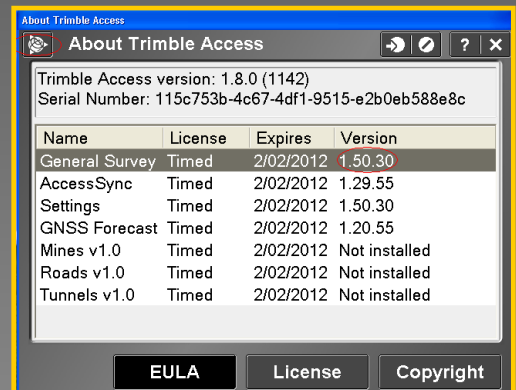
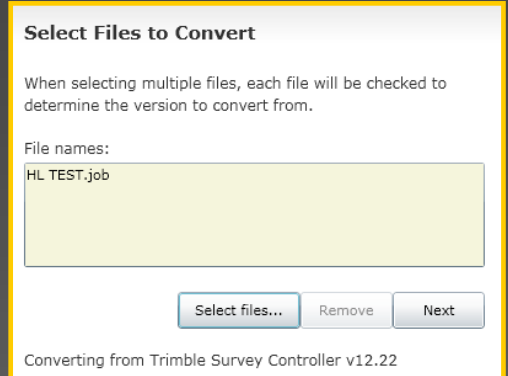
- Connect data collector using Active Sync
- Note: Not necessary to Export jobs from controller
- Navigate to Trimble Data and copy jobs to convert to desktop
Visit - <http://fileconversions.trimbleaccess.com/>

- Click Select Files Tab and Browse to desktop
Add multiple file by holding down **Ctrl**. Then click Next.

- **Note:** The Converting tool relates to the *General Survey* Version and not the *Trimble Access* Version.
You can check the General Survey Version by clicking the Trimble Symbol-Top left, and selecting about

- Select what version you want to take jobs too
- The converter will upload and then convert your jobs
When complete download the created files into a folder on desktop.

Use Active Sync to copy converted files back to Trimble Data



Converting Trimble Survey Controller v12.22 Files

Please select the version that you would like to convert the files to.

- Trimble Survey Controller v12.40
- Trimble Survey Controller v12.43
- Trimble Survey Controller v12.45
- Trimble Survey Controller v12.46
- Trimble Access General Survey v1.00
- Trimble Access General Survey v1.10
- Trimble Access General Survey v1.20
- Trimble Access General Survey v1.30
- Trimble Access General Survey v1.40
- Trimble Access General Survey v1.50

Previous Next

If you have any queries about this technical tip or require other technical advice, please contact Aaron Burgess on 0429 101 767 or email aaron@hlse.com.au

SMALL BUSINESS NEWS—Handley Surveys on the Small Business Advisory Board of Australia

Handley Surveys, one our of our valued clients based in Karratha have been invited to join the Small Business Advisory Board of Australia this year. Henry Handley the managing director will join the panel and attend this year's meeting in mid July at the head office in Sydney . They will meet with senior staff at the Reserve Bank of Australia (RBA) to discuss finance issues for small businesses throughout Australia

This is a great compliment to Henry and all the team at Handley Surveys, the business has a fantastic reputation throughout the industry and it is thanks to all of their hard work.

Handley Surveys currently have 15 Trimble S8 Total Stations & the first Trimble FX Scanner in Australia!



High Precision Trimble GX Laser Scanner Available for Hire

We are pleased to announce that we now have a Trimble GX High Precision Laser Scanner available for hire for any of your 3D Laser Scanning requirements. The Trimble GX is a very high precision instrument and capable of high data collection rates. It is the ideal scanner for plant work, re-engineering projects as well as standard volumes and other survey tasks. It is very simple to use and we can offer training as required. There is also the option to process the data yourself or a full processing to finished product is also available. This instrument is available for short or long term hire at very competitive rates.

For more information please contact Dion Wilson or Jesse Huff at our office on (08) 9445 8811.

To learn more about the Trimble GX Laser Scanner please click [HERE](#)

